

Artikelnummer

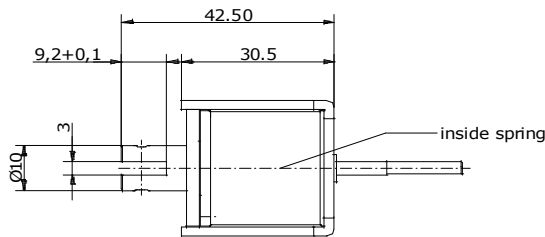
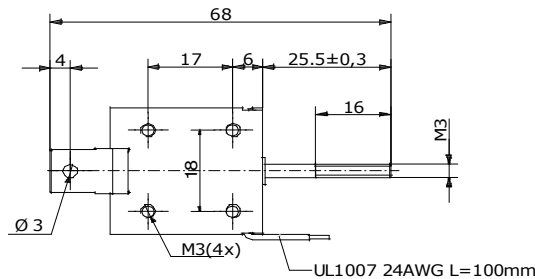
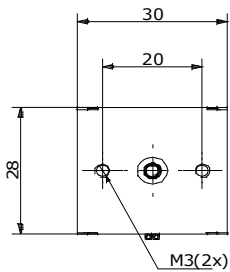
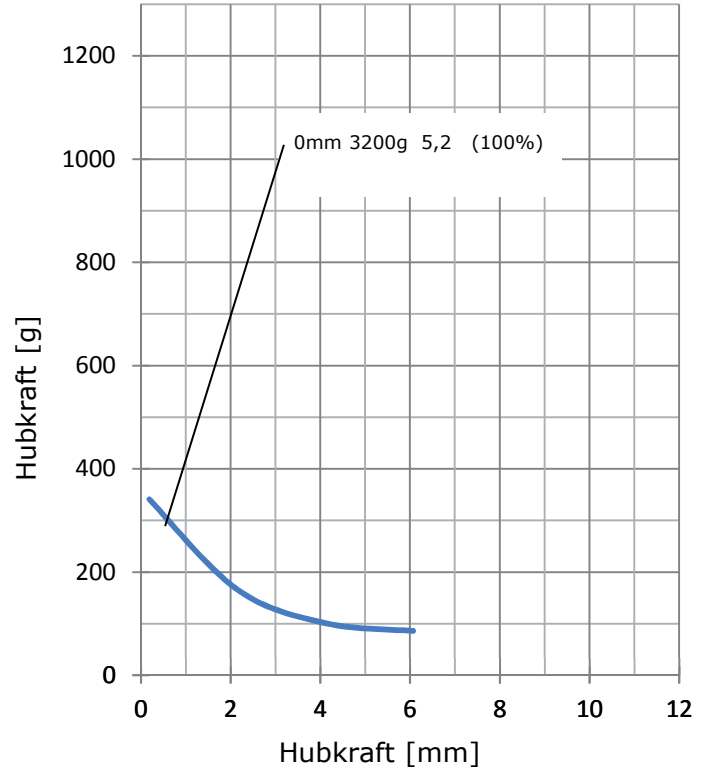
3	2		2		4	2
1	2	3	4	5	6	7

Spannung:

6 VDC	2
12 VDC	3
24 VDC	4
48 VDC	5

Ausführung:

ziehend	2
ziehend federrückgestellt	3
drückend	4
drückend federrückgestellt	5



Daten	ED = $\frac{\text{ON [sec]}}{\text{ON [sec] + OFF [sec]}} \times 100\%$	100%
		continous
	max. ON time [sec]	∞
	at 20°C [W]	5,2
	at 20°C [mA]	866
	Widerstand [Ω]	Spannung [VDC]
	6,92	6
	13,86	12
27,7	24	